

BANGKOK, THAILAND - 25 MAY - 28 MAY 2025



THE HUNGARIAN ACCREDITATION COMMITTEE'S (MAB) WFME 2020 - BASED ACCREDITATION STANDARDS WITH QUALITY ASSURANCE AND ASSESSMENT FOCUS

PROF. DR. VALÉRIA CSÉPE — President
DR. PÉTER VÁMOSI — Member of Medical Education WG
DR. PÉTER LEVENTE LAKATOS — Director General



HUNGARIAN HEIs

64 HEIs total

4 state universities (all in Budapest)
1 foundation -run, company -owned (recent transition from state -owned)

25 non -state universities

- 19 foundation-owned
- 6 church-run

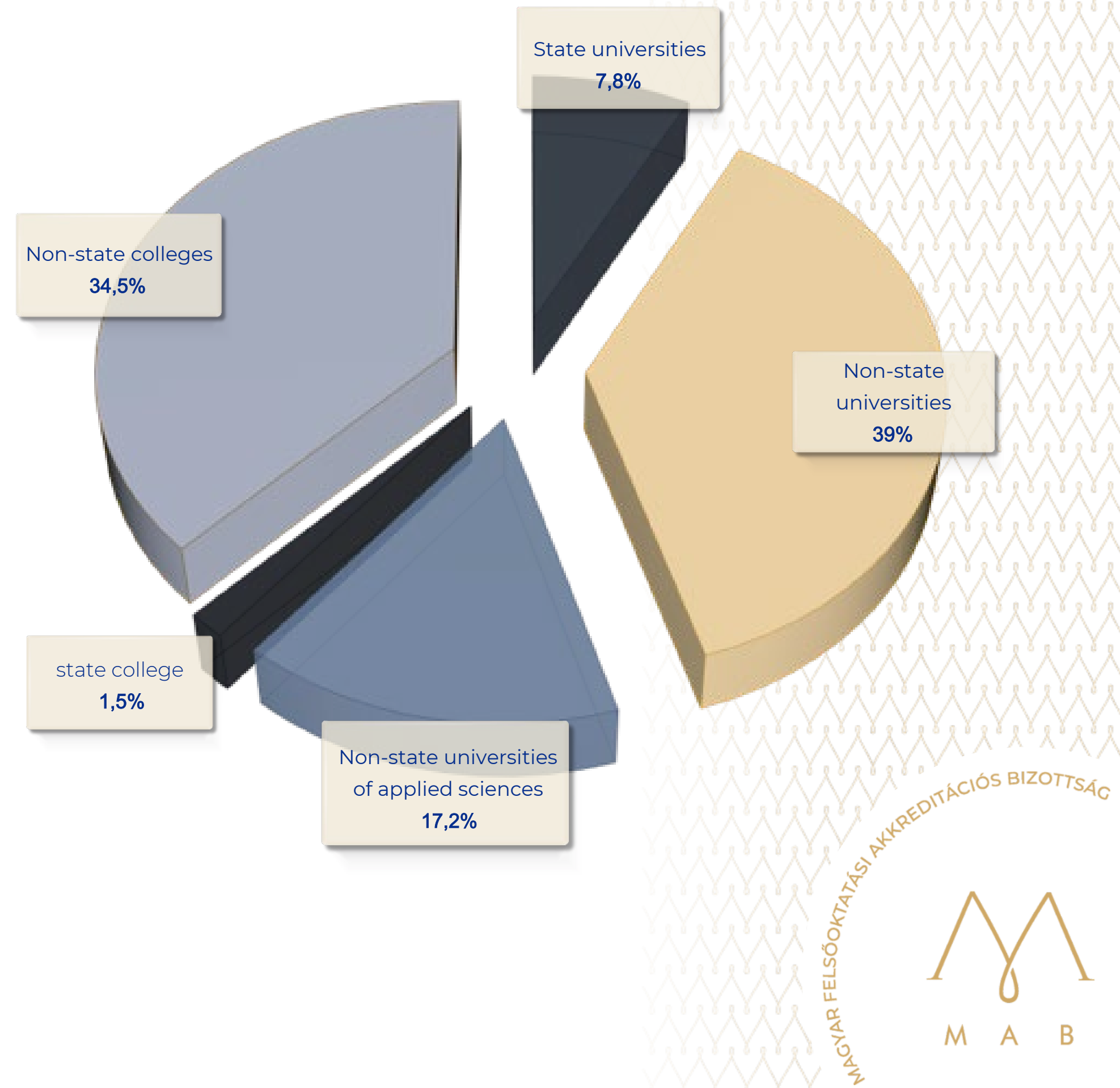
11 non -state universities of applied sciences

- 8 foundation-owned
- 3 church-run

1 state college

22 non -state colleges

- 4 foundation-owned
- 18 church-run



HUNGARIAN ACCREDITATION COMMITTEE (MAB)

- **date of establishment** : 1993
- **legal background** : Act LXXX of 1993 on HE
- **legal status** : public benefit organization, a legal entity, without court registration
- **MAB employees** : ~ 20
- **expert pool** : ~ 1800 (in total)
- **international organizational relationships** : Member of **ENQA** and **CEENQA** ; registered on **EQAR** ; recognized by **WFME** and **NCFMEA** ; member of **GAIN**, **CoARA** , affiliate member of **EUA**, founding member of the **V4QA Forum**.

MAIN ACTIVITIES



INTERNATIONAL PRESENCE AND PARTICIPATION

Member, registered, recognized, affiliate



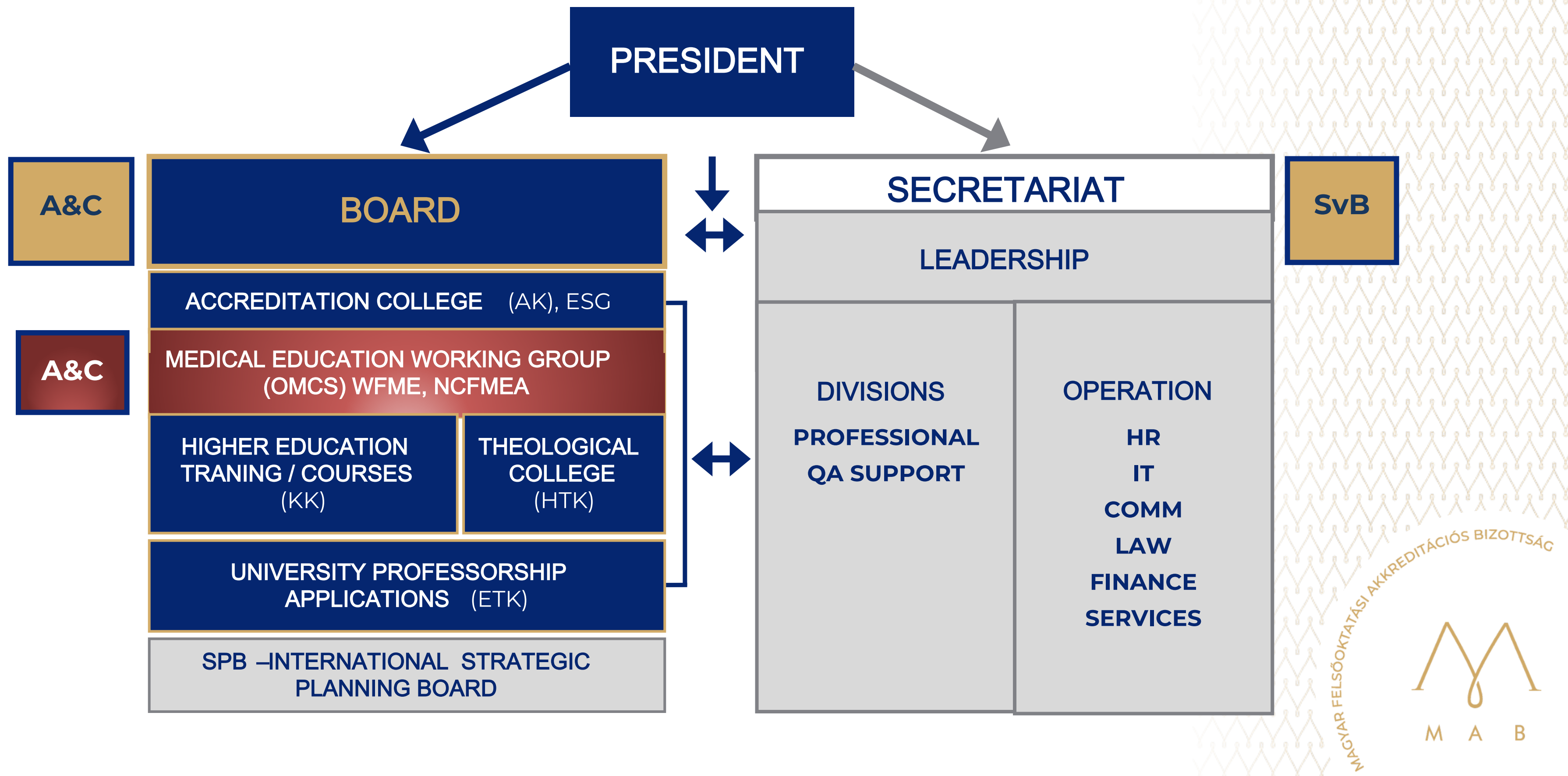
Bi- and multilateral co-operations



Participation in international projects and WGs



HUNGARIAN ACCREDITATION COMMITTEE (MAB)



MEDICAL SCHOOLS

STUDENTS
5330

HUN
2333

INT
2927

Faculty of Medicine
Semmelweis University



Faculty of Medicine
University of Debrecen



STUDENTS
3038

HUN
1190

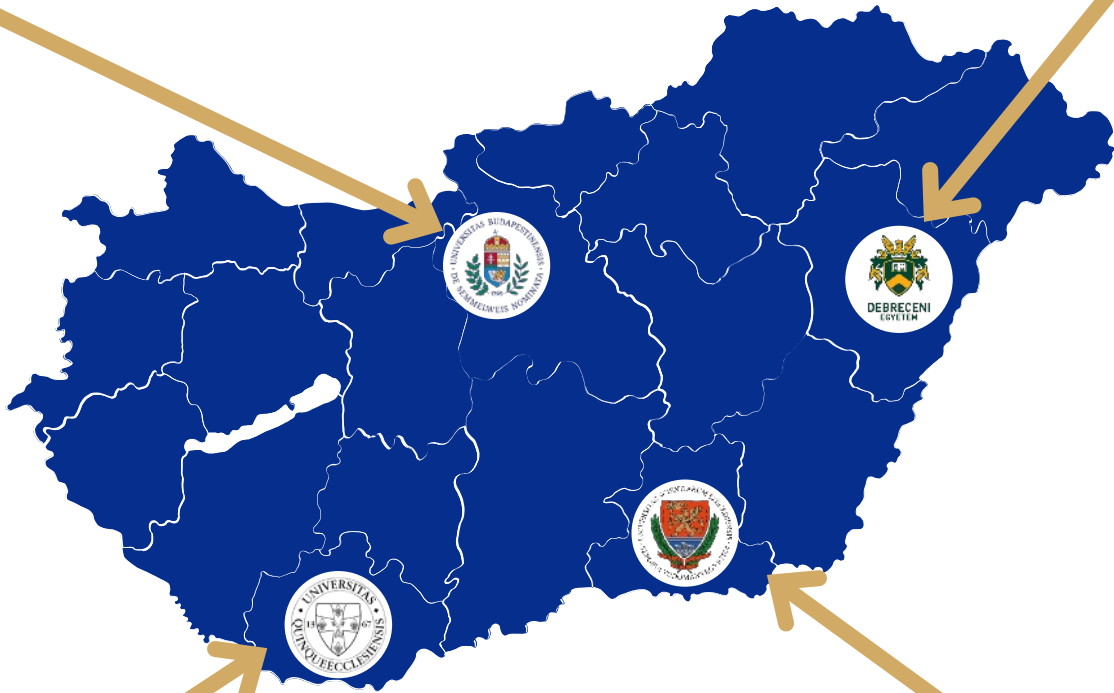
INT
1848

STUDENTS
13626

HUN
6075

INT
7551

THE Global Ranking 2025: 201t
High subject rankings in basic medical education

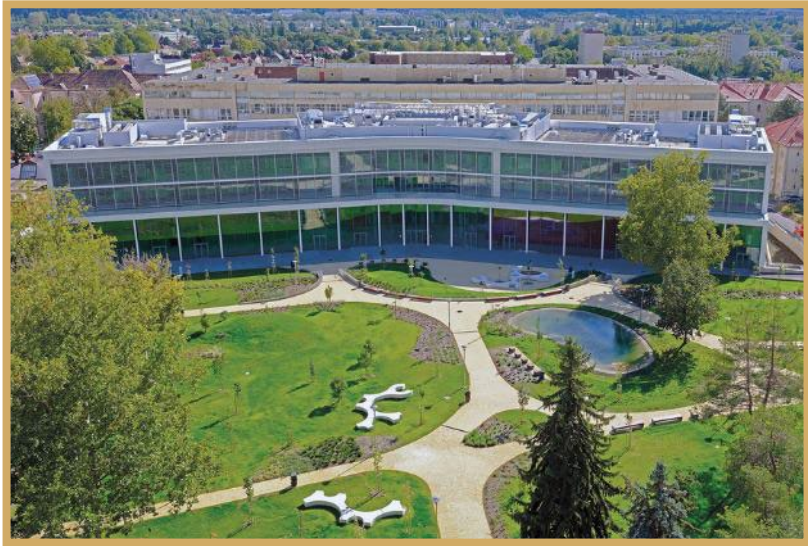


STUDENTS
2841

HUN
1177

INT
1664

Medical School
University of Pécs



Albert Szent-Györgyi Medical School
University of Szeged



STUDENTS
2417

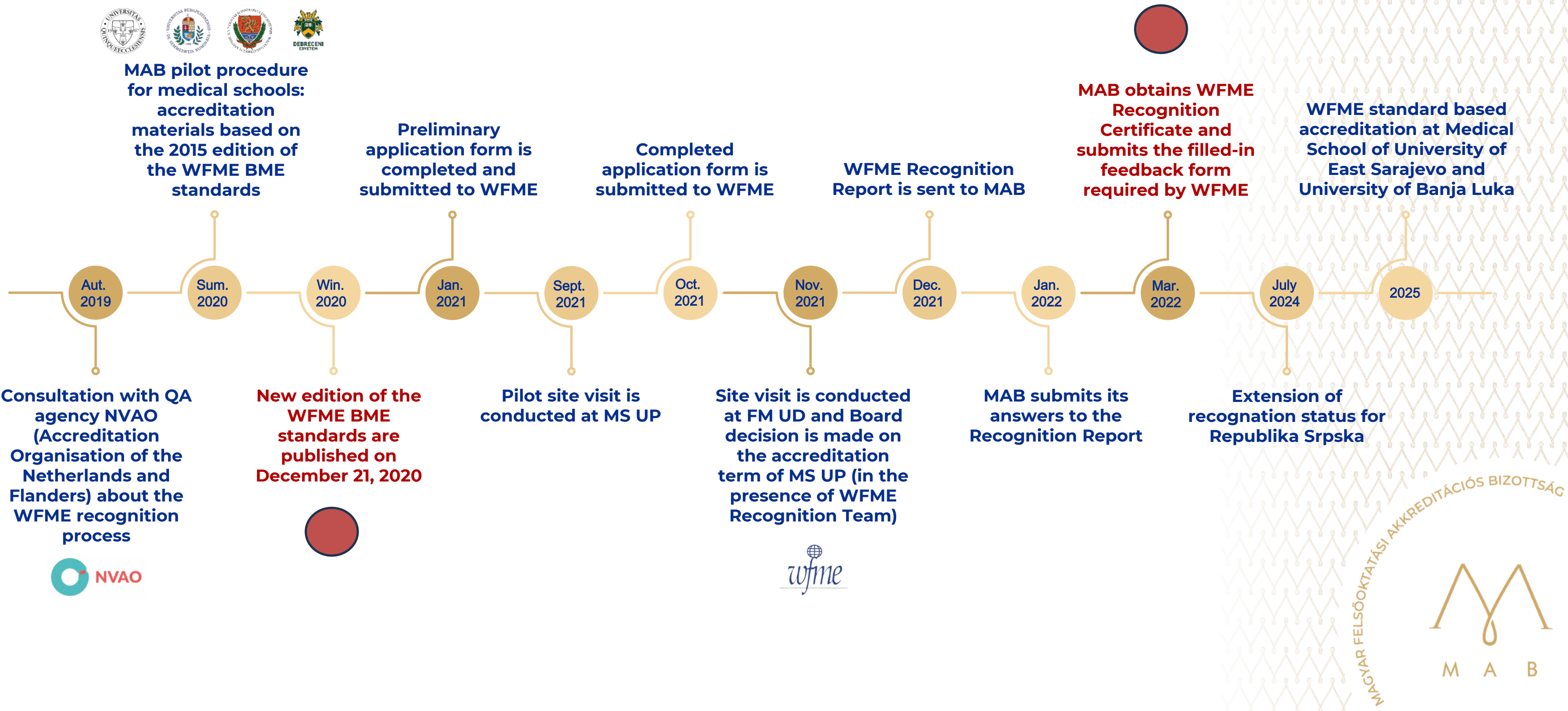
HUN
1300

INT
1117

AKKREDITÁCIÓS BIZOTTSÁG



WFME ACCREDITATION OF MAB - TIMELINE



STANDARDS

BASED ON THE WFME BME 2020 STANDARDS

1. Mission statement

2.1 Educational programme

2.2 Development and review of the educational programme

2.3 Educational, teaching and pedagogical methods used to deliver the educational programme

3.1 System of assessment

3.2 Quality assurance of assessment

4.1 Admission and selection of students

4.2 Student support system

5.1 Selection of academic staff

5.2 Performance, training and development of academic staff

6.1 Educational infrastructure

6.2 Clinical training resources

7. Quality assurance

8.1 Structure and organisation

8.2 Organisational units supporting the operation of the medical school and its educational and academic activities

The medical school has a **PUBLIC MISSION** statement that sets out its values and goals.

The medical school has clear and transparent processes for the **DEVELOPMENT, APPROVAL AND PERIODIC REVIEW** of its educational programme.

The medical school has processes in place to provide **FEEDBACK** on the effectiveness of assessment methods and procedures and other academic requirements. Assessment data are fed back to those concerned, and these data are used to improve the quality of the assessment system, the educational programme and the medical school.

The medical school has a **QUALITY ASSURANCE ORGANISATION** and quality assurance processes and documents that support the implementation of its educational programme.

MAB'S ASSESSMENT TABLE

	STANDARD	FULL ACCREDITATION	CONDITIONAL ACCREDITATION	LIMITED ACCREDITATION
1.	Mission statement	compliant	compliant / partially compliant	compliant / partially compliant / non-compliant
2.1	Educational Programme	compliant	compliant	compliant
2.2	Development and review of the educational programme	compliant	compliant / partially compliant	compliant / partially compliant / non-compliant
2.3	Educational methods used to deliver the educational programme	compliant	compliant / partially compliant	compliant / partially compliant / non-compliant
3.1	System of assessment	compliant	compliant / partially compliant	compliant / partially compliant / non-compliant
3.2	Quality assurance of assessment	compliant	compliant / partially compliant	compliant / partially compliant / non-compliant
4.1	Admission and selection of students	compliant	compliant	compliant
4.2	Student support system	compliant	compliant / partially compliant	compliant / partially compliant / non-compliant
5.1	Selection of academic staff	compliant	compliant	compliant
5.2	Performance, training and development of academic staff	compliant	compliant / partially compliant	compliant / partially compliant / non-compliant
6.1	Educational infrastructure	compliant	compliant	compliant
6.2	Clinical training resources	compliant	compliant	compliant
7.	Quality assurance	compliant	compliant / partially compliant	compliant / partially compliant / non-compliant
8.1	Structure and organization	compliant	compliant	compliant
8.2	Organizational units supporting the operation of the medical school and its educational and academic activities	compliant	compliant	compliant

	Minimum criteria - all of them must be compliant to obtain accreditation
	Quality assurance processes
	Support processes

Full accreditation (8 years)	All the standards are compliant.
------------------------------	----------------------------------

Conditional accreditation (8 years + written report)	All minimum criteria are compliant.
	Max. 1 standard is partially compliant, the rest of the standards is compliant.
	Max. 1 standard is partially compliant, the rest of the standards is compliant.

Conditional accreditation (5 - 8 years + follow-up)	All minimum criteria are compliant.
	Standards may be compliant, partially compliant or non-compliant, but max. 1 standard is non-compliant.
	Standards may be compliant, partially compliant or non-compliant, but max. 1 standard is non-compliant.

Conditional accreditation (less than 5 years + follow-up)	All minimum criteria are compliant.
	Standards may be compliant, partially compliant or non-compliant, but 2 or more standards are non-compliant.
	Standards may be compliant, partially compliant or non-compliant, but 2 or more standards are non-compliant.

FELSŐOKTATÁSI AKKREDITÁCIÓS BIZOTTSÁG



CORRESPONDENCE BETWEEN WFME BME 2020 AND ESG 2015 STANDARDS

- **Quality assurance**
- **Programmes**
- **Student admission**
- **Assessment of students**
- **Teaching staff**
- **Learning resources**
- **Student support**
- **Public information**
- **Monitoring and review**

WFME BME 2015 standards:
structured according to 9 areas, with
35 sub-areas



WFME BME 2020 Standards:
organised into 8 areas, with 21 sub-
areas

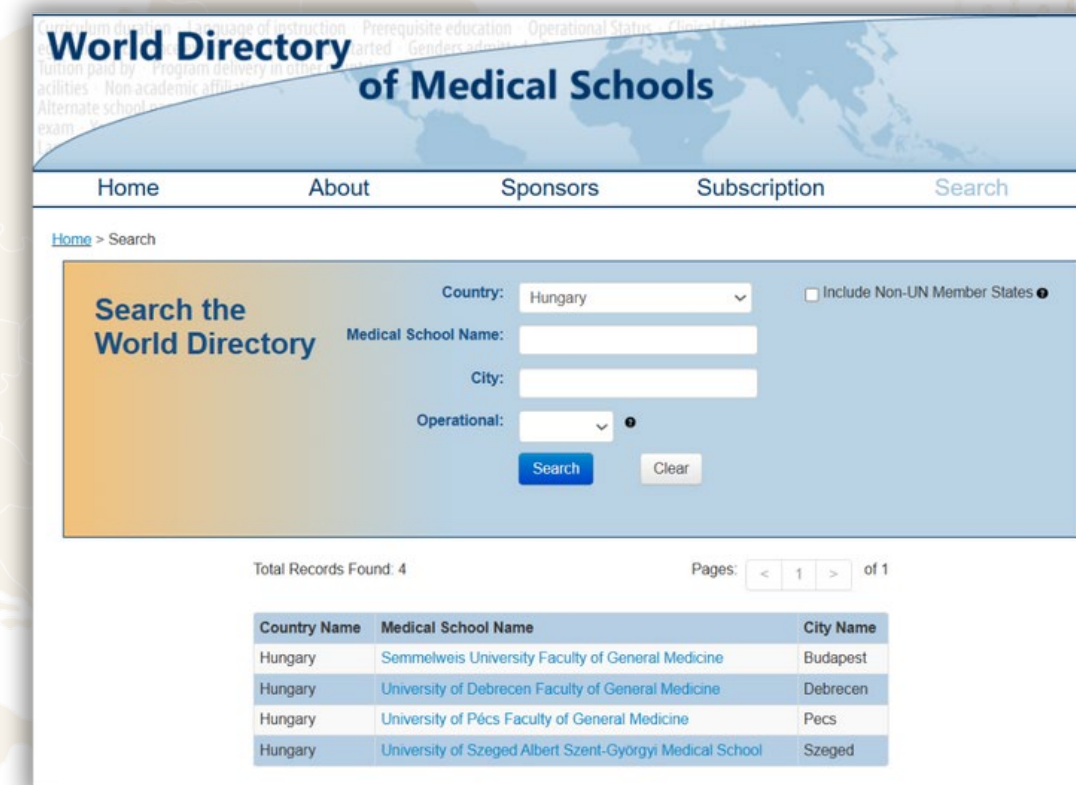
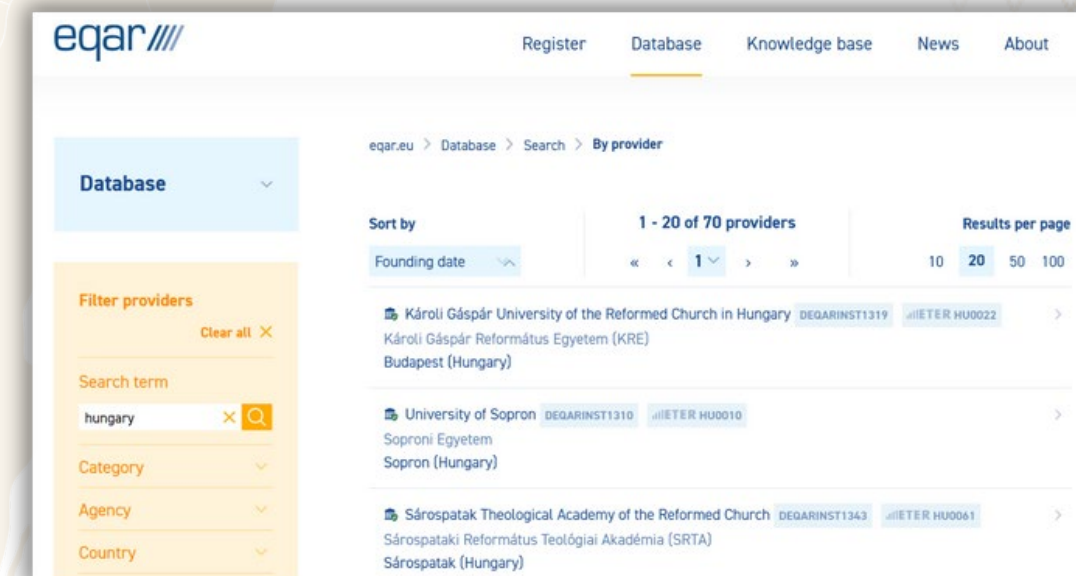
iQA of HEIs
eQA of HEIs
QA of agencies



IINTEGRA - complex procedure for all HEIs = Impact of WFME recognition

USE OF DEQAR PRACTICE TO ENHANCE THE WORLD DIRECTORY OF MEDICAL SCHOOLS

- MAB is registered on EQAR.
- It ensures the international transparency of Hungarian accreditation decisions and quality assurance procedures.
- The DEQAR database includes the accreditations and reports conducted by MAB, allowing for the comparison of Hungarian higher education institutions with those in other countries. This promotes the implementation of international quality assurance standards and global information sharing.
- In the future, the goal is to make all reports available in both Hungarian and English, increasing accessibility and transparency.
- The **World Directory of Medical Schools (WDOMS)** is a free, searchable database containing information on over 3,700 medical schools worldwide, including both current and historical institutions.



eqar ///
 European Quality Assurance
 Register for Higher Education

MACGYAR FELSOOKTATASI AKKREDITACIOS BIZOTTSAG
 M A B

SUMMARY



MAB is Hungary's national quality assurance agency (generic), internationally recognized (WFME, NCFMEA, ENQA, EQAR).



WFME 2020 standards ensure internationally aligned, high-quality medical education.



WFME and ESG frameworks complement each other, providing both strategic and operational QA.



All Hungarian medical schools successfully participated both in pilot and formal accreditation.



Transparent accreditation system: full, conditional, or limited based on clear criteria.



International visibility through DEQAR and multilingual reporting.



Impact of the WFME recognition on structure (MEWG) and operation (INTEGRA).

THANK YOU FOR YOUR ATTENTION

Hungarian Accreditation Committee (MAB)
Office: H-1087 Budapest, Hungária krt. 40-44.
E-mail, Teams, Skype: titkarsag@mab.hu



www.mab.hu



Hungarian Accreditation Committee (MAB)



MAB

